

# Alexander Palm

3,014 Sq. Ft., 5 Bedroom, 5 Bath, 1 Car Garage



Elevation A



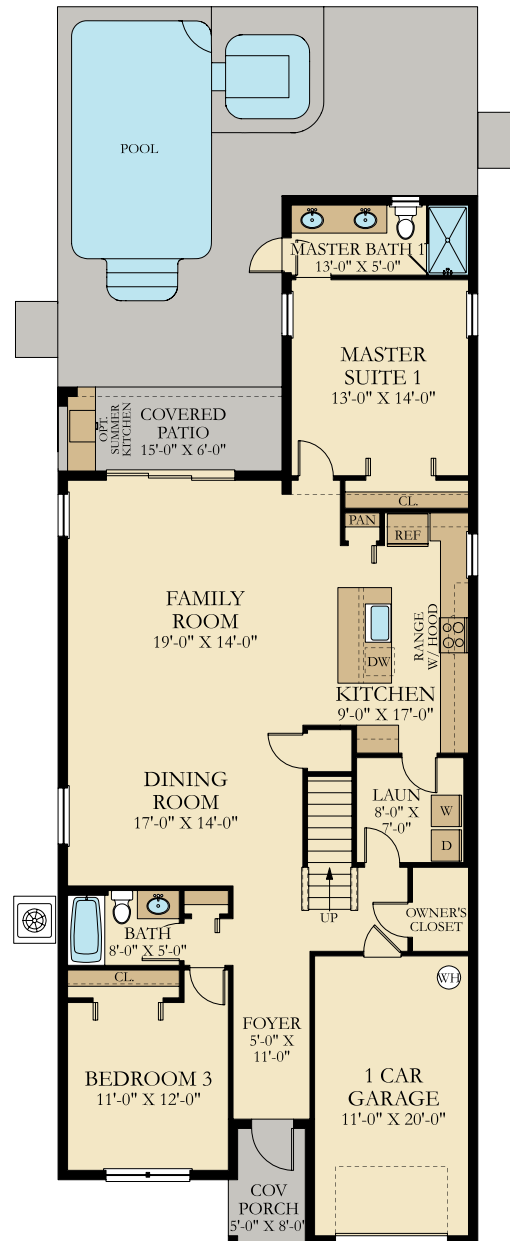
Elevation B

See Important Legal Notices for terms and conditions.



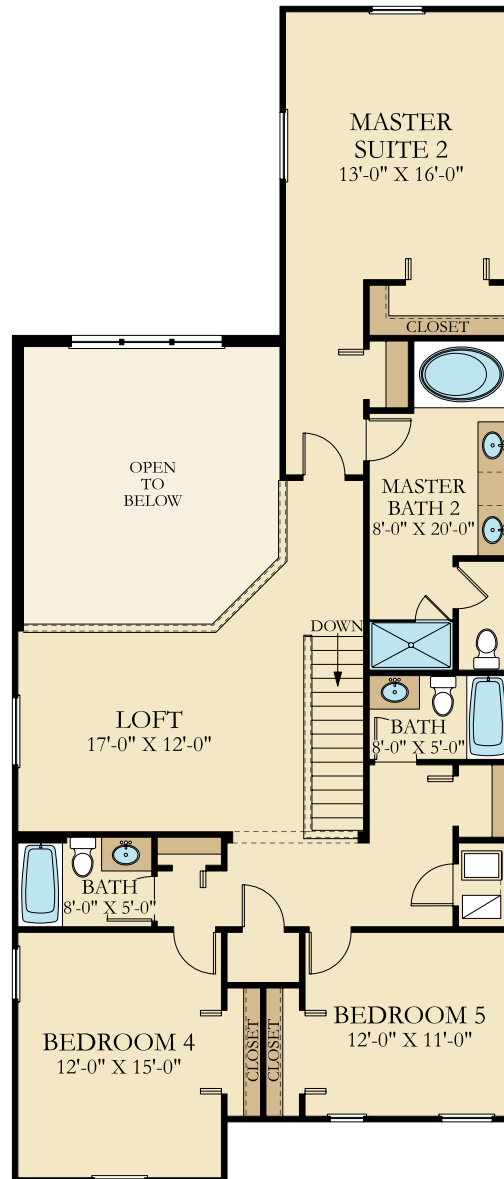
# Alexander Palm

5 Beds | 5 Baths | 1 Car Garage | 3,014 sq. ft.



# Alexander Palm

5 Beds | 5 Baths | 1 Car Garage | 3,014 sq. ft.



# Storey Lake

## Resort Series Included Features

### INTERIOR DESIGN FEATURES

- Baby howe wood casing
- Large colonial-style baseboard
- 2" smooth finish blinds
- Designer solid surface window sills
- Sherwin-Williams® Lennar Supreme interior paint
- 16" tight mesh ventilated wire shelving in pantry
- Textured interior wall finish
- 1/2" interior drywall
- 1/2" ceiling board
- Schlage® chrome finish door hardware
- GE® topload washer
- Frontload dryers
- HomeTeam® built-in pest control

### EXTERIOR DESIGN FEATURES

- Fully landscaped and improved homesite
- 2,500-PSI concrete footer and slab
- Heated splash pool with screened enclosure
- Barrel tile roof
- Energy efficient Low E dual pane window keep the cool air in and the heat out and allows natural light into your home while saving energy

### LENNAR ECOSMART ENERGY SAVING FEATURE

- Electric water heater in Townhomes
- Double-pane, Low-E windows
- Foam filled block wall insulation (townhomes only)
- Programmable thermostats
- ENERGY STAR rated refrigerator
- 15 SEER HVAC

### ELEGANT BATHROOM FEATURES

- Maple wood cabinets in all baths
- 12" x 24" Ceramic Floor Tile
- Designer light fixtures in all baths
- Granite countertops in all baths in 3 finishes
- Accent & Listello tile in master bathroom
- 12" x 24" ceramic wall tile in master bath shower
- Decorative towel bars and paper holders
- Elongated commodes in all baths
- Designer oval undermount sink bowl
- Raised counters in all baths
- 42" high mirrors in all bathrooms

### ELECTRICAL FEATURES

- Decora designer light switches
- Pre-wired for fans in all bedrooms and family room
- Multi-media outlet in family room
- Designer lighting in all bathrooms
- Lighting in all walk in closets
- LED lighting in kitchen
- Exterior entry point lighting
- Coach lights
- Wireless Security with home automation
- Universal outlets in bedroom, home office, study, kitchen
- Compact fluorescent and LED light bulbs

### FLOORING FEATURES

- 12" x 24" Ceramic Flooring in all wet living areas
- Upgraded 7/16" carpet padding
- Mohawk® green certified plush wall to wall upgraded carpeting

### LUXURY KITCHEN FEATURES

- GE ENERGY STAR Stainless steel 25-cubic-foot, side-by-side refrigerator with built-in ice maker
- GE Stainless steel slide-in range with glass cook top
- GE Stainless steel dishwasher
- GE Stainless steel microwave
- Luxury 42" Shaker Panel wood cabinets with crown molding chrome hardware
- Designer granite countertops
- Decorative Tile Backsplash
- Designer faucet with built-in spray

### LENNAR COMMITMENT TO EXCELLENCE

- Complete Customer Care Representative Service Department
- Independent engineering inspections throughout the construction process
- Over 50 years of homebuilding in Central Florida
- 1-year full-service warranty on all new homes
- Traded on the NYSE (symbol LEN)
- Universal American Mortgage Company
- North American Title
- Lennar Affinity Partner Program
- Dedicated Quality Assurance Department

## LENNAR.COM

The specific features in a home may vary from home-to-home and from Community-to-Community. We reserve the right to substitute equipment, material, appliances and brand names with items of equal, in our sole opinion, value. Color and size variations may occur. The prices of our homes, included features, and available locations are subject to change without notice. Please see the actual home purchase agreement for additional information, disclosures and disclaimers relating to the home and its features. Void where prohibited by law. © 2015 Lennar Corporation. Lennar and the Lennar logo are registered service marks of Lennar Corporation and/or its subsidiaries. CRC 1331209. 8/15

